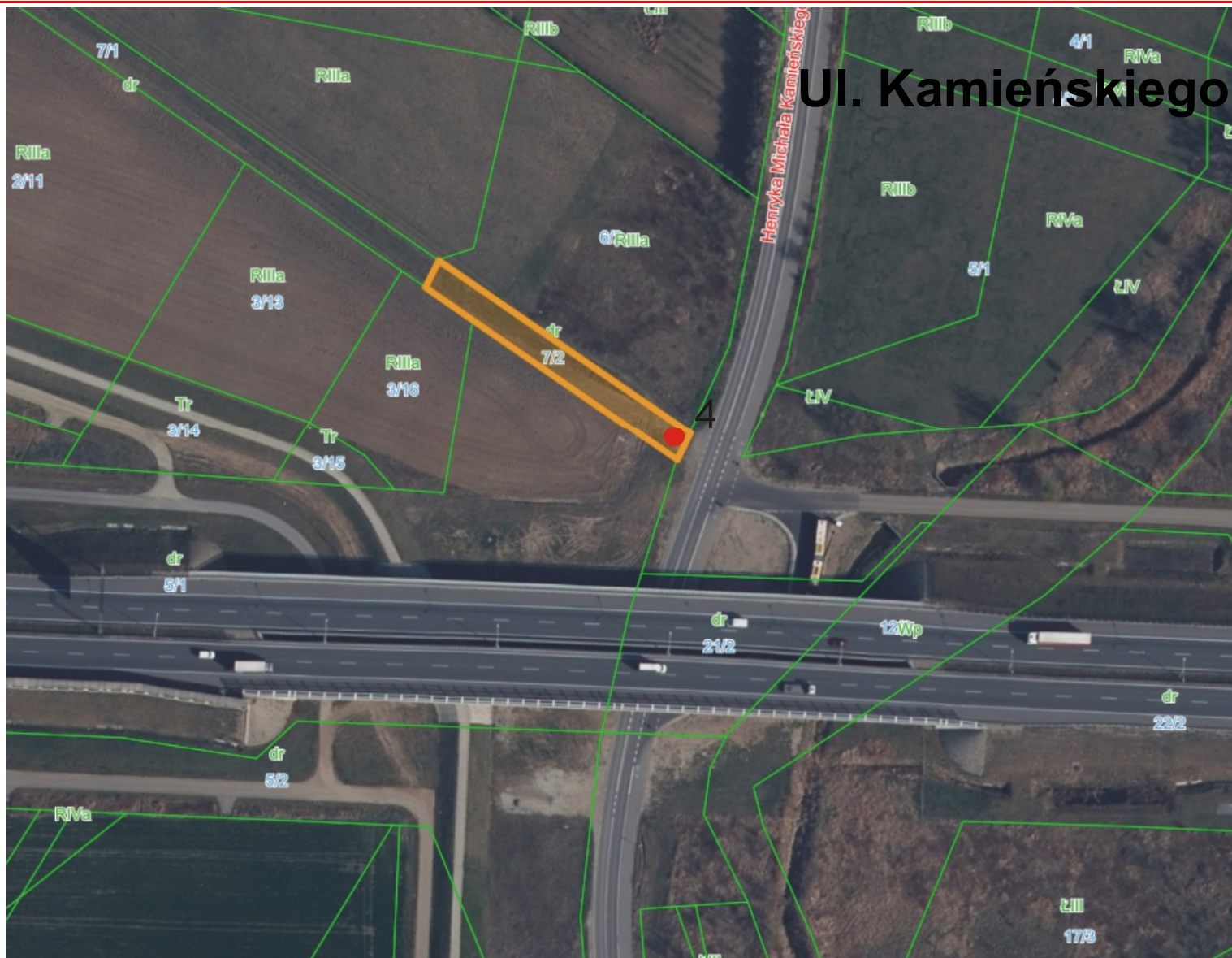
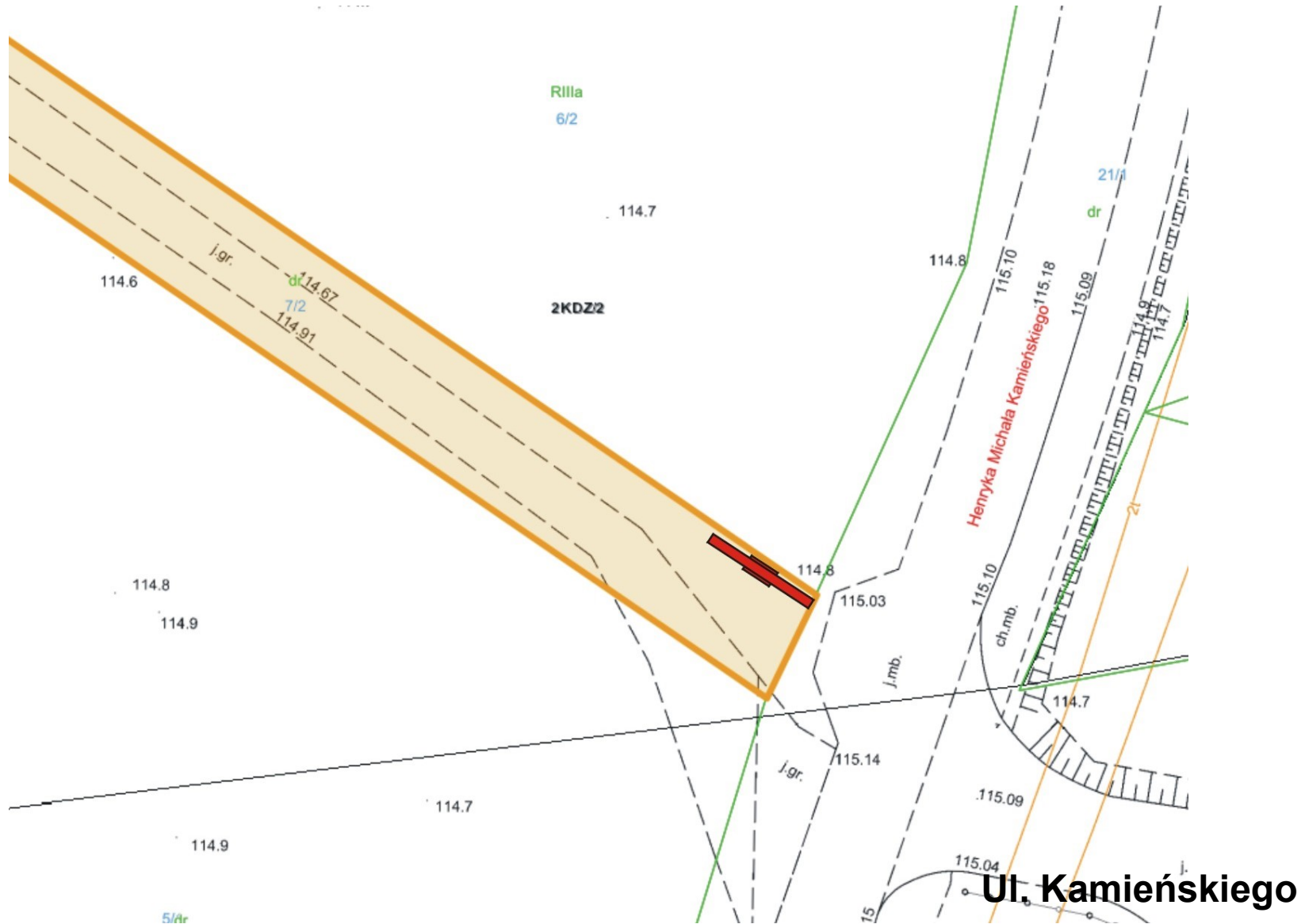


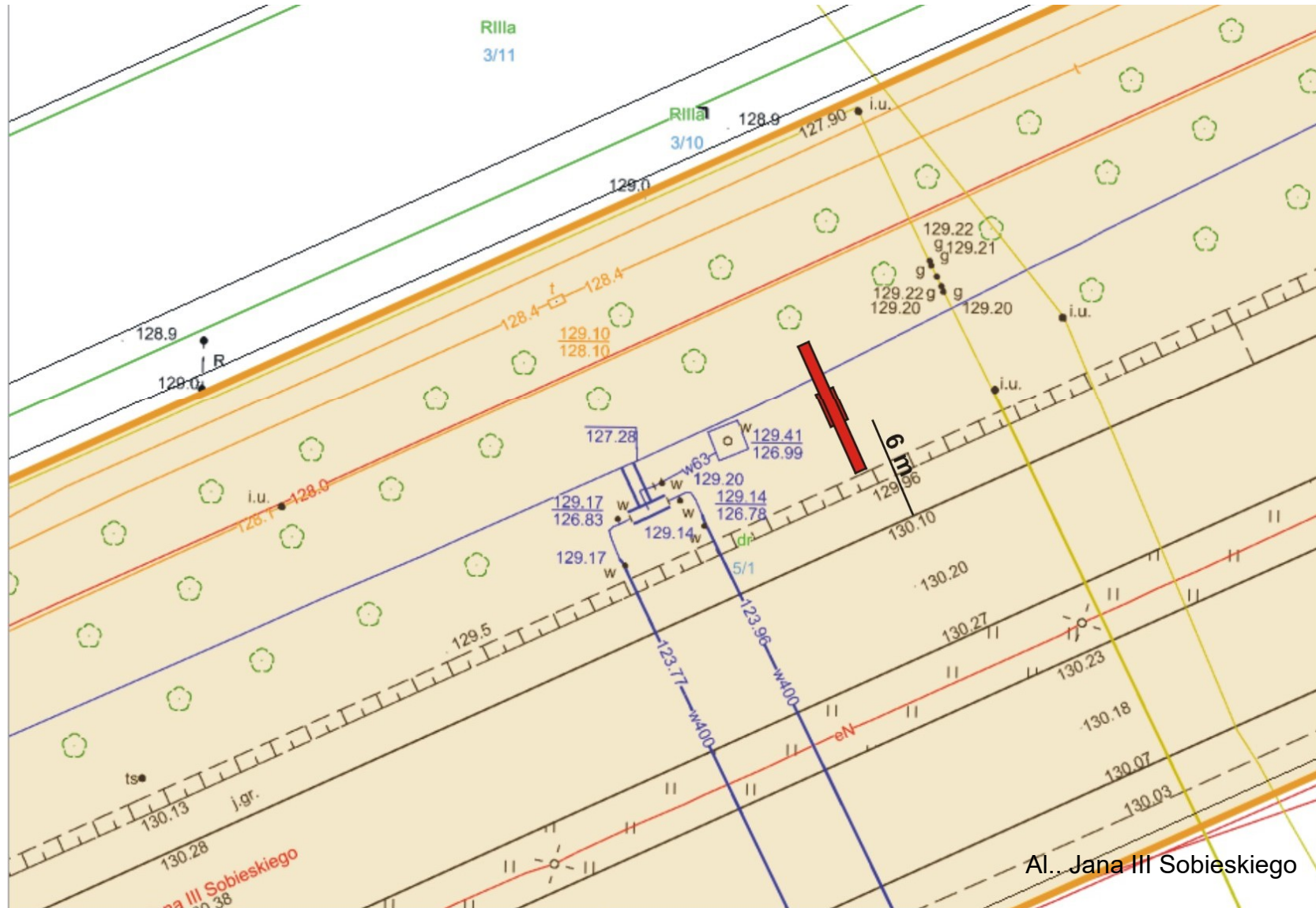
LOKALIZACJA OBIEKTÓW REKLAMOWYCH BILBORDY

INWESTOR:
GMINA WROCŁAW
reprezentowana przez ZDIUM





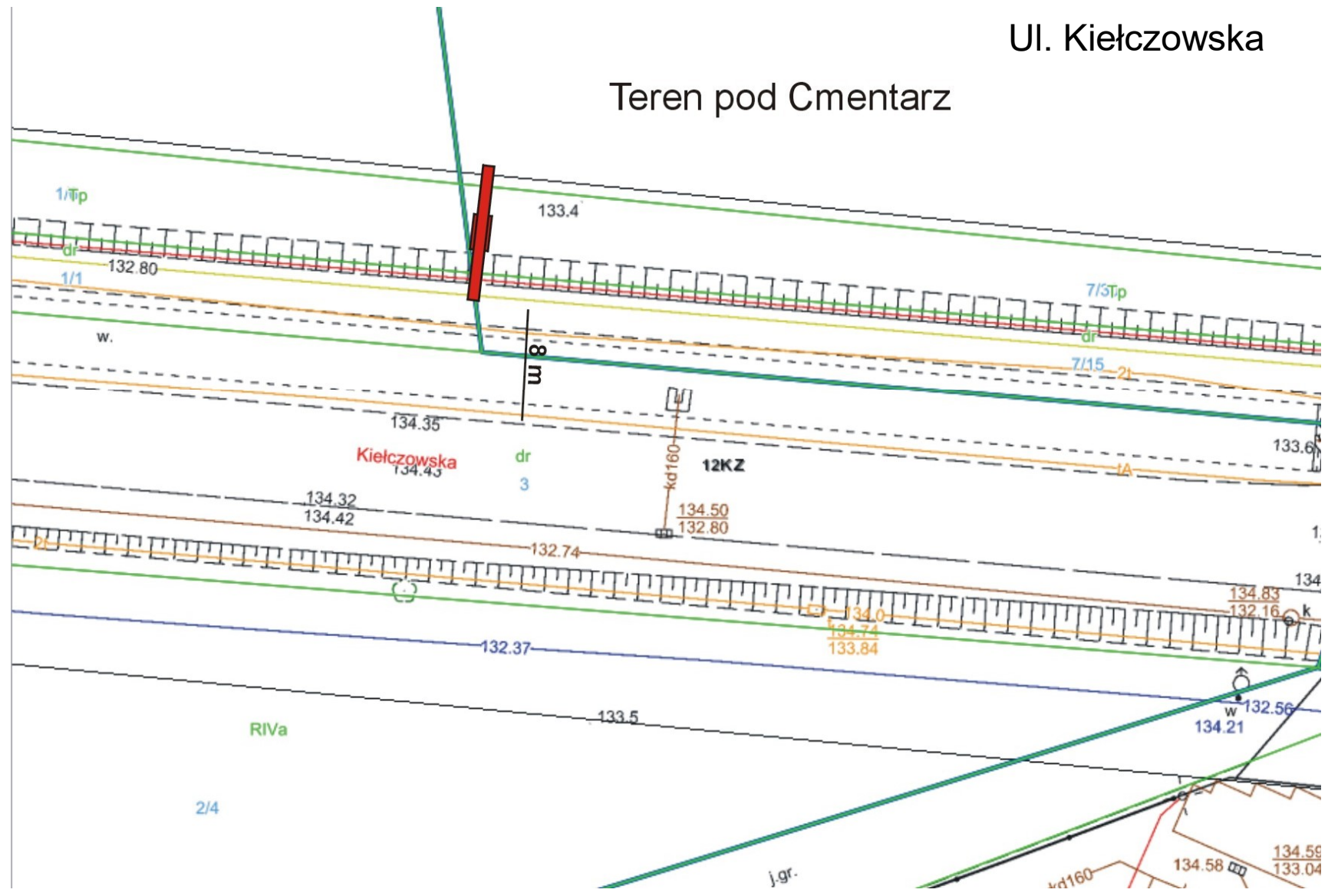


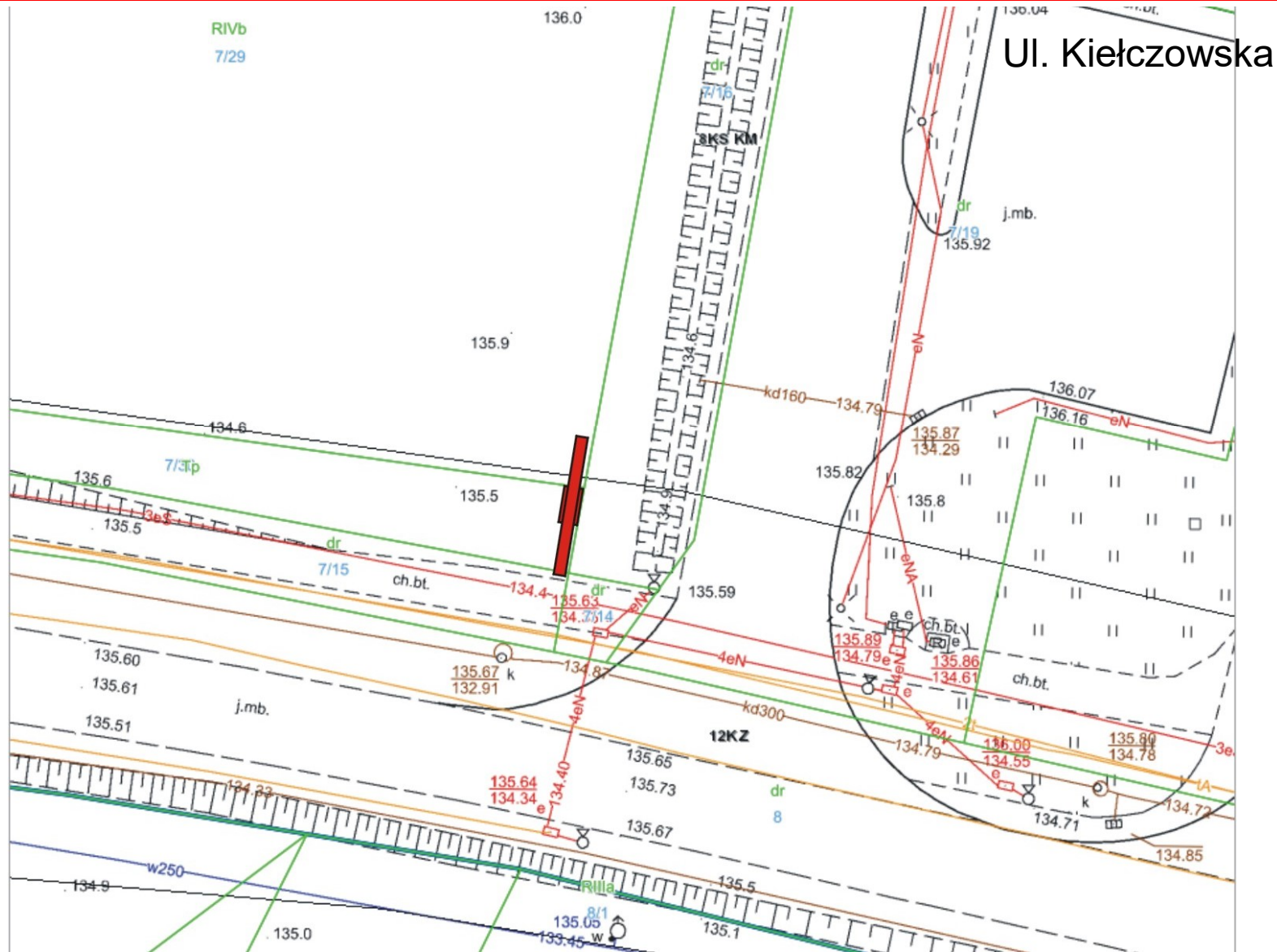


Al. Jana III Sobieskiego

Ul. Kielczowska

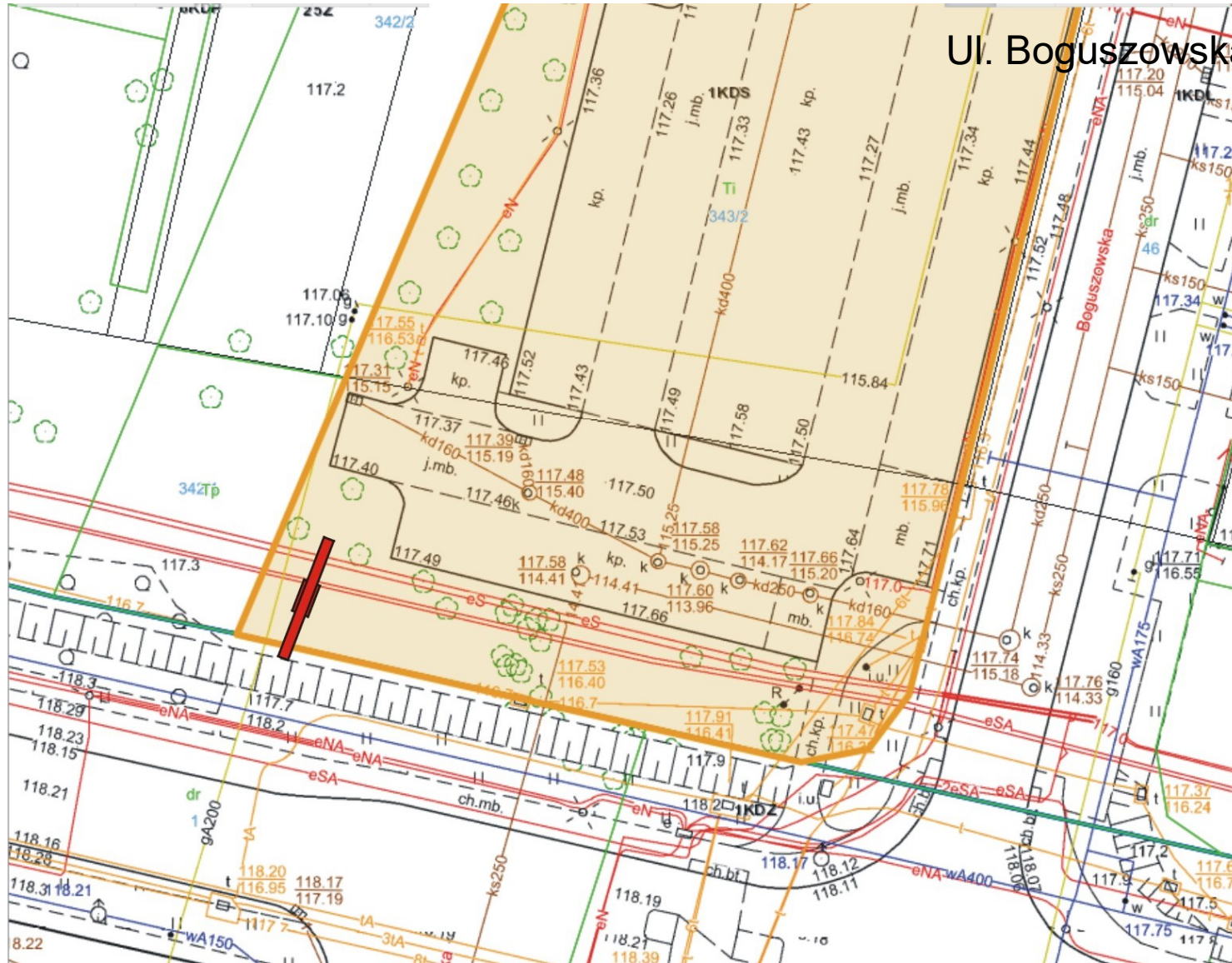
Teren pod Cmentarz

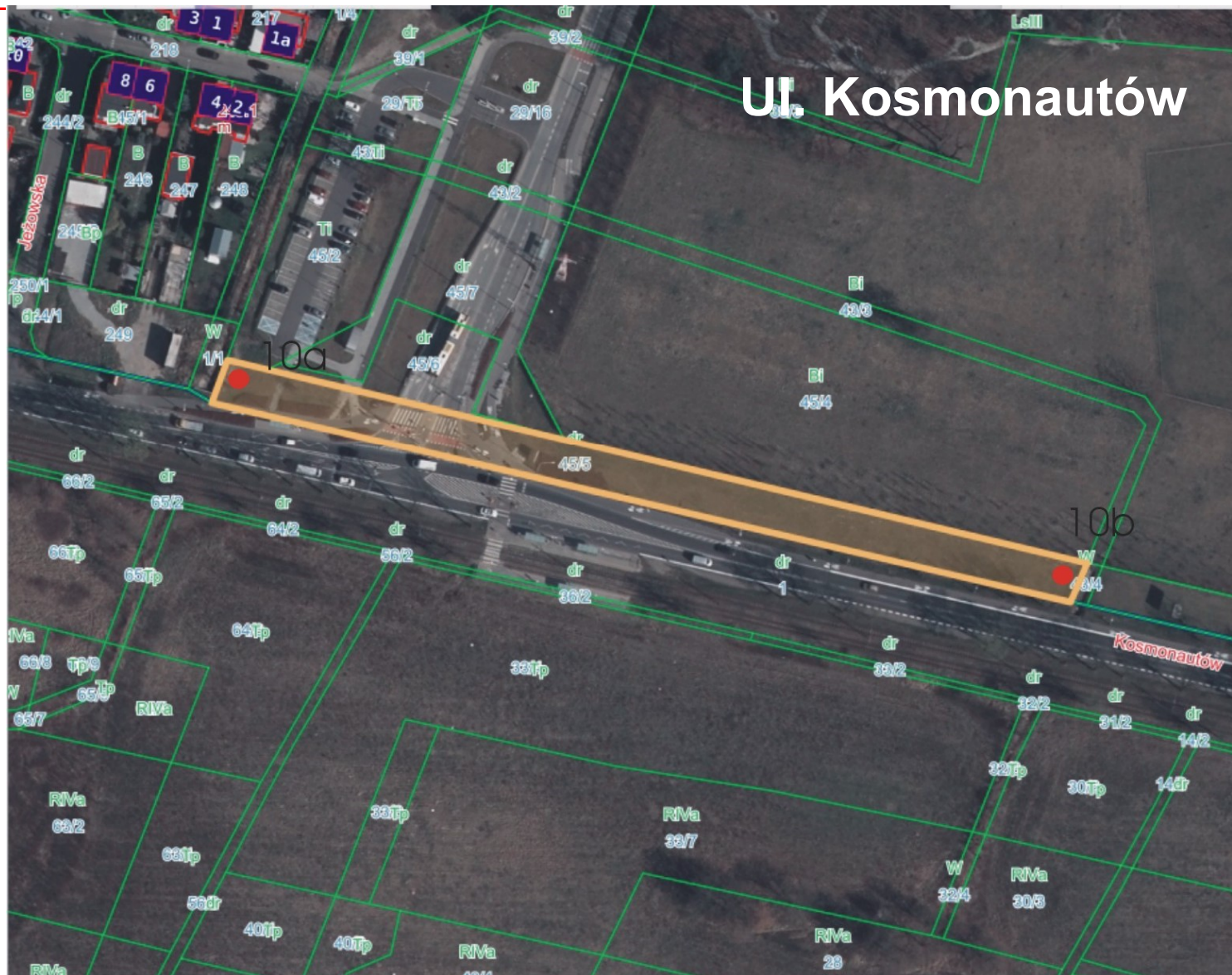


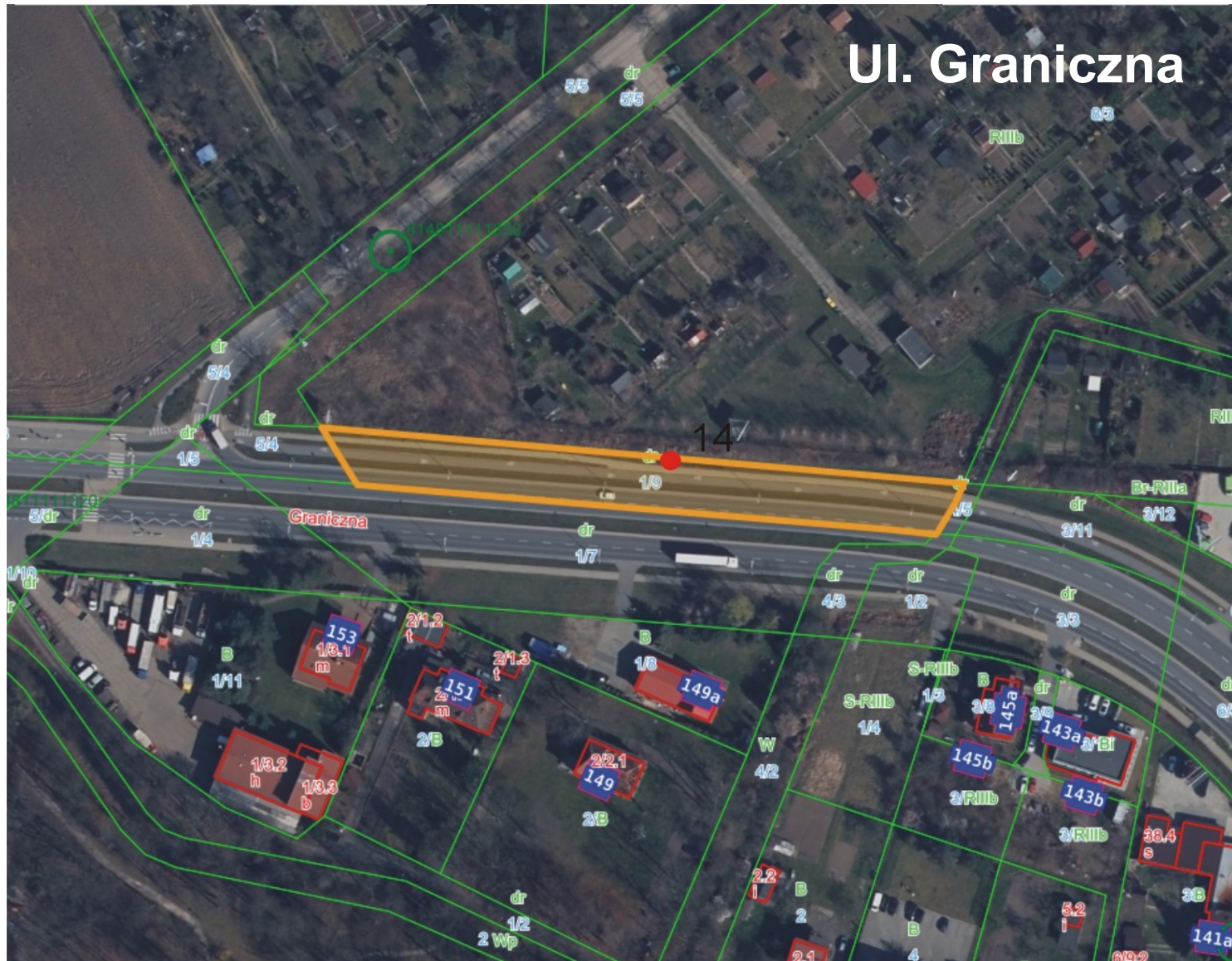




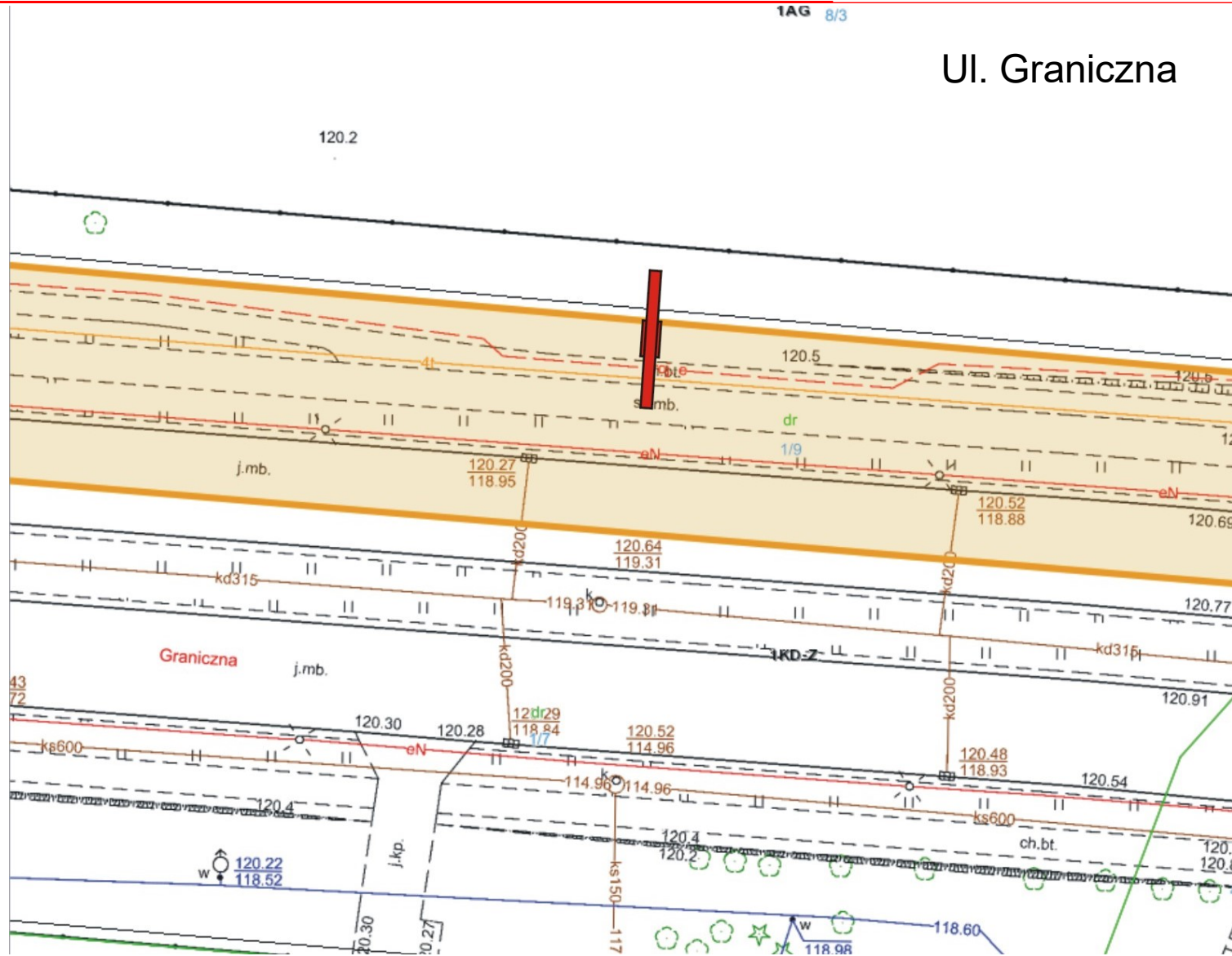
Ul. Boguszowska



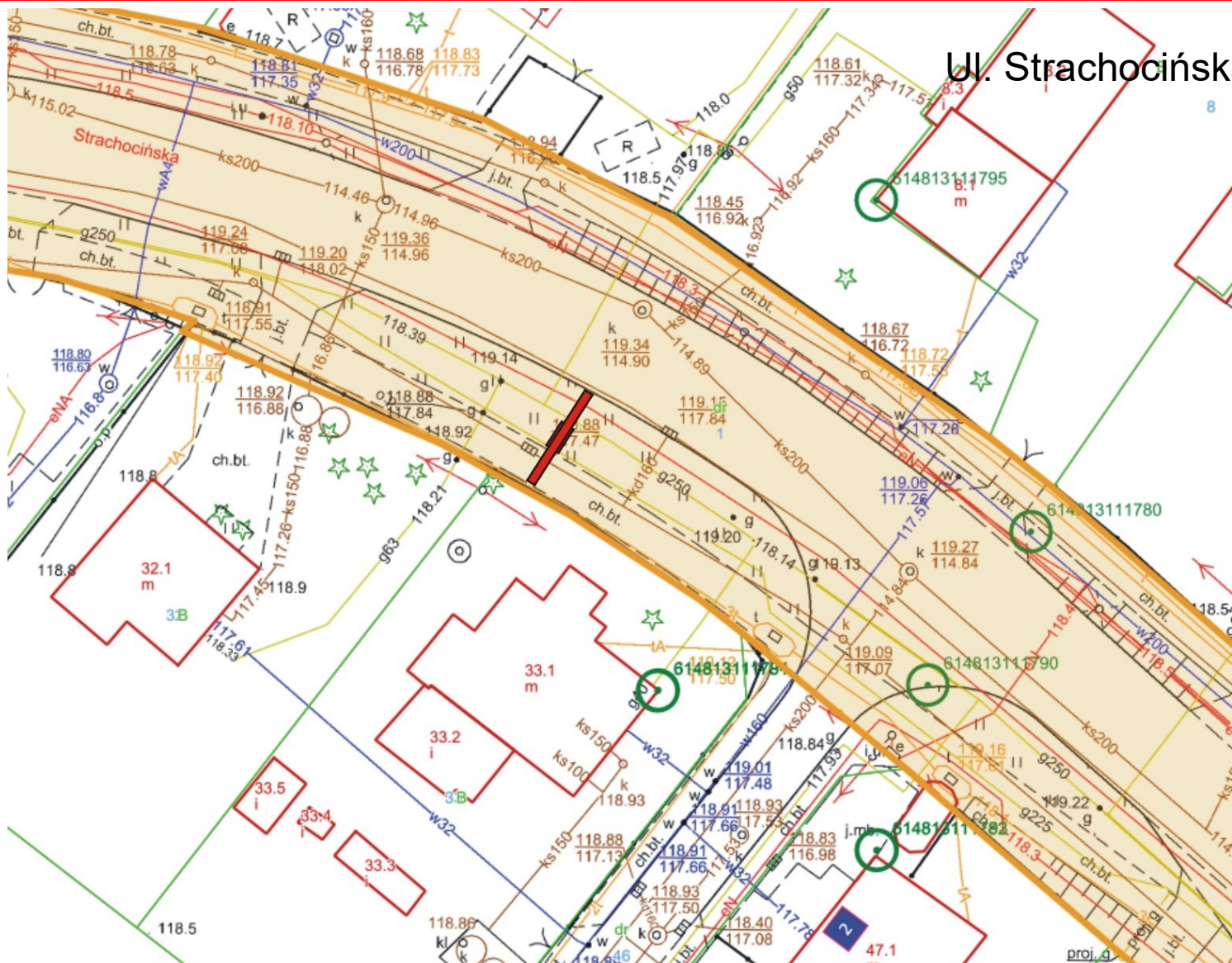




Ul. Graniczna

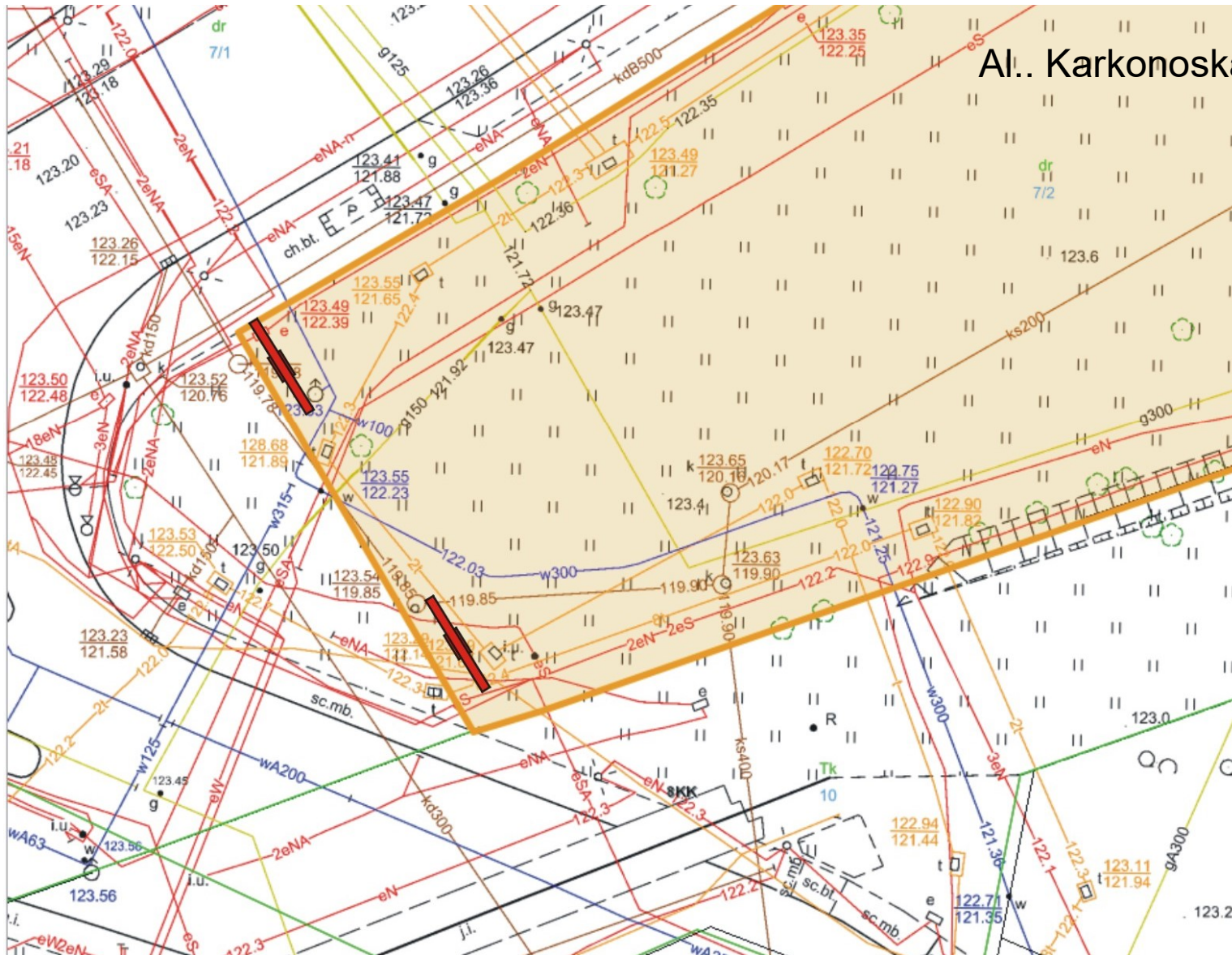






Ul. Strachocińska





Al. Karkonoska



